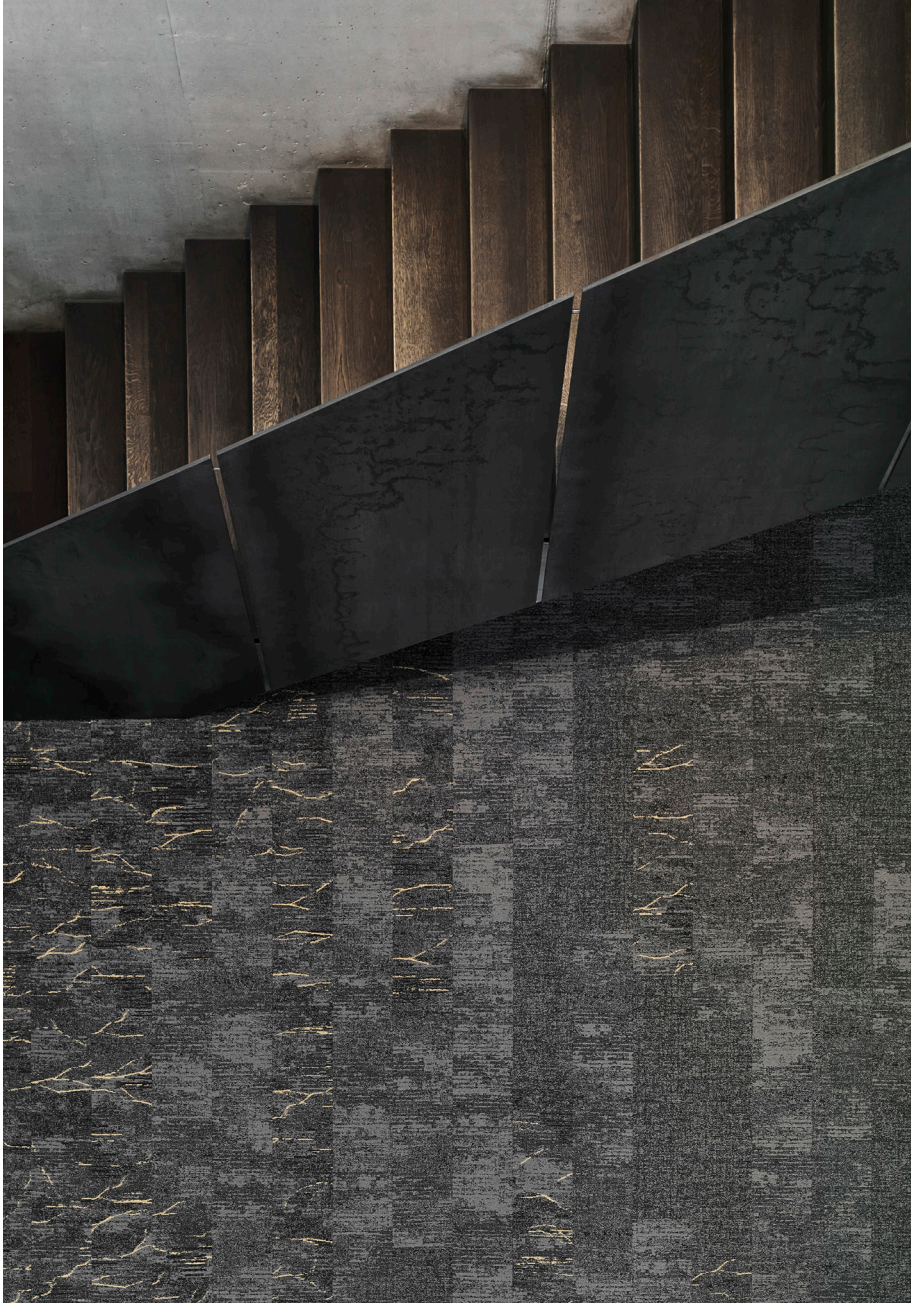


General Installation Guidelines

Carpet Tiles



Mohawk Group



1. General Installation Guide

Storage & transport

The packaging of Mohawk Group Carpet Tiles will depend upon the selected product. For the correct packaging information we refer to the technical specifications, which can be found on the Mohawk Group website; www.mohawkgroup.eu.

Each individual carton will display specific packing information; number of pieces, tile size and contents. Please note that the Mohawk Group Carpet Tiles should be stored and transported on a flat surface. Do not store the boxes in very cold (less than 2°C) or very warm (more than 27°C) or damp places. Pallets can be double stacked for transportation purposes only, long term and site storage must be individual pallets.

Prior to installation

Visual inspection

Please ensure the product is inspected and checked for damage, defect or variation prior to installation in adequate light conditions. Do not install any carpet tiles that display any imperfections. For defects that are visible prior to installation, Mohawk Group will never assume responsibility for the uplift & relay costs. Installation implies acceptance.

Quality, colour and dye lot are mentioned on each box (see example below). Pile direction, dye lot and colour are shown on the back of each carpet tile. Check that this information corresponds to those ordered, the quantities are correct and there is no visible damage to the boxes. We recommend that you always use materials from a single dye lot for each installation, as we cannot guarantee a shade match between different dye lots.

Suitability

- For the installation of Mohawk Group Carpet Tiles the subfloor must be hard, flat, smooth, clean and dry, as well as being free from defects and fit for purpose
- Mohawk Group Carpet Tiles are suitable for all types of raised access flooring according to EN12825
- Mohawk Group Carpet Tiles are only suitable for indoor installation.



Carpet Tiles - Installation

Composition, construction and quality of the subfloor

Knowledge of the composition and construction of the subfloor or base provides valuable information that allows you to correctly check the acceptable humidity, flatness, compressive and tensile strength of the subfloor. In addition, it tells you what type of floor preparation, levelling/smoothing compound, and possible moisture barrier you may need during the installation process. When there is ambiguity or doubt about the quality or composition of your subfloor, check your local installation standards and/or seek advice from your floor preparation, levelling compound manufacturer/supplier.

National regulations & standards

- Site and installation conditions must always comply with the relevant national regulations and installation standards.
- In case the national standard or regulation conflicts with the manufacturer's recommendation, the most stringent of the two prevails.

Subfloor preparation

Irregularities in the subfloor

Good preparation is essential for trouble-free installation. The appearance of Mohawk Group Carpet Tiles will only be as good as the quality of the base over which it is installed. Subfloors should be prepared in accordance with national and European standards.

The subfloor must be hard, flat, smooth, clean and dry, as well as being free from defects and fit for purpose. When required, scrape off and remove old adhesives and loose laying levelling compound. Make sure the subfloor is flat and free from chemical substances and other contamination.

Wood substrates are required to be structurally sound, flat, dry and securely anchored. Uneven surfaces should be leveled by the application of 6mm thick plywood, which may require sealing to prevent absorption of the applied adhesive.

The moisture content of the subfloor

- The moisture content of the subfloor must be in accordance with local or national standards for the installation of textile floor coverings.

Direct-to-earth concrete and stone subfloors must have an effective Damp Proof Membrane (DPM) in accordance with the national standards for the installation of textile floor coverings. Follow manufacturer's detailed instructions for the installation of a surface applied DPM and the use of levelling compound. An overview of recommended manufacturers and suppliers can be provided by Mohawk Group.

The effectiveness of a surface applied DPM heavily depends on the type of product, the way of application and the site conditions. It is the responsibility of the installer to get the correct advice from the manufacturer of the DPM and to apply it in accordance with their recommendations.

Important

Floor installation should not begin until the installer has assessed and approved the subfloor and installation conditions.



Carpet Tiles - Installation

Acclimatisation

Mohawk Group Carpet Tiles must acclimatize in the area of installation for at least 24 hours prior to installation. The space in which the Mohawk Group Carpet Tiles are to be installed must be maintained at an ambient temperature of at least 15 °C and at a relative humidity of less than 75% (ideally less than 65%).

Store the planks or tiles in straight piles away from heating, cooling or windows with direct intense sunlight. This is to achieve a gradual acclimatisation.

Starting installation

Temperature conditions

The acclimatisation conditions must be respected before, during and after the installation to allow the adhesive to completely dry, which can take up to 72 hours. The substrate temperature must not be lower than 10 °C and must be at least 3 °C above the dew point of the ambient air.

Underfloor heating

Mohawk Group Carpet Tiles can be used with traditional water-based underfloor heating systems (according to standard EN 1264 part 1 to 5). Wired electrical systems are not recommended unless the system is encased in a minimum of 9mm of suitable levelling compound. Direct contact with electrical wired heating systems must be avoided. The surface temperature must never exceed 27°C. If in doubt seek further advice. 72 hours after installation the underfloor heating must be gradually increased by increments of 5°C per day until it reaches the standard operating temperature conditions, with a maximum operating temperature of 27°C. For the suitability of the system please check the manufacturer's instructions.

Underfloor cooling

Mohawk Group Carpet Tiles can also be installed over floor cooling systems. However, the supply temperature of the cooling water must not be reduced below the dew point temperature. Always keep the temperature of the subfloor at least 3 degrees above the dewpoint. Temperatures below the dew point will produce condensation and can therefore damage the adhesive and the floor covering.



Recommended adhesives

Please seek further advice regarding Xtrafloor® adhesives or approved adhesives by Mohawk Group for your country. Adhesive recommendations may differ by country or continent due to the composition of the adhesive, local climatic conditions and national installation regulations/standards.

For any exceptional conditions and/or the use of a NXT or Ecoflex Echo backing, which require specific adhesive selection, please contact the Mohawk Group Technical Service team.

Installation step by step

Recommended tools

- Tape measure
- Pencil
- Chalk line/laser line to ensure the installation starts/remains straight
- Tackifier or adhesive and appropriate applicator: paintroller for tackifier and trowel for adhesive (not required when using Xtrafloor® Flexlok tabs)
- Xtrafloor® Flexlok tabs where required
- Damp cloth to remove adhesive residue (not required when using Xtrafloor® Flexlok tabs)
- Utility knife
- Carpet glider
- Only required for NXT backing: roller minimum 50kg



General

The most widely used set-out and easiest method is to start on a 100% straight line through the longest length of the area and subsequently work to the left and to the right. Define the preferred direction of installation of the Mohawk Group Carpet Tiles. Measure the space accurately in width and calculate a proportionate distribution of the first and last row. Next mark a start line on the floor using a straight-edge and pencil or chalk line.

You will install the first row along this line.

Never cut carpet over carpet, as this can result in over penetration of the blade and severed loops on the lower carpet.

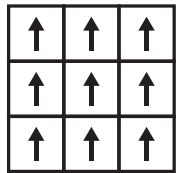
- Mohawk Group Carpet Tiles can be installed in different laying patterns depending on the product. Before you begin the installation, please consult our technical specifications and/or packaging to determine the recommended instructions for the product being installed. The underside of the carpet tile contains an arrow which will help you with this. Besides the arrow, the underside contains other information as well (dye lot, colour,...). You can find the most common patterns on the next page.



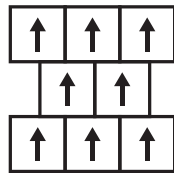
Carpet Tiles - Installation

2. Overview laying patterns

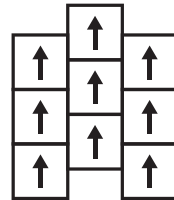
Tiles



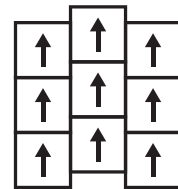
Monolithic



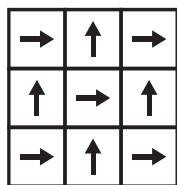
Brick Ashlar



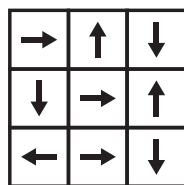
Vertical Ashlar
1/2



Vertical Ashlar
1/3

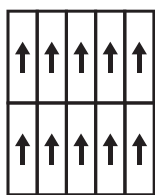


Quarter turn

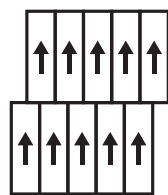


Multi-directional

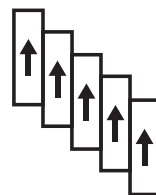
Planks



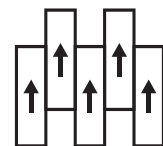
Monolithic



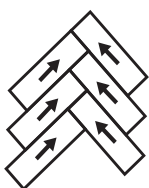
Monolithic
stepping



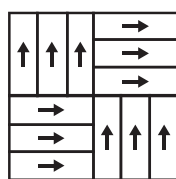
Brick Ashlar



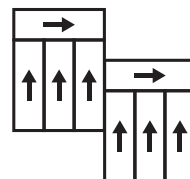
Half-lap



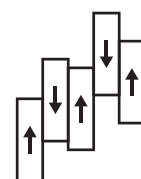
Herringbone



Basketweave



Plank half-lap



Random